



INFORMATION IS POWER

Visibility is the engine that enables a procurement team to add value to their company. Consol presents spend data in an easy to use format that allows managers and executives to quickly make better, more strategic decisions. Executives and managers can view high level reports, aggregated across divisions and regions and easily drill down on key metrics that are important to their specific roles.



Although Consol can be configured to be completely specific for different regions and/or divisions, all data is aggregated to create maximized leverage with suppliers. By cross referencing industry data with client specific information, Consol presents not only performance history for each client, but how those clients measure up to the rest of the industry.

Consol provides three levels of spend analytics that enable smarter, data-driven decision making: standard reports, ad-hoc reports and performance analytics. All reports can be pulled as needed in a self-service environment and/or batched and scheduled for automated emailing to a select group of users. All reports can be easily exported to html, pdf, xls and doc formats. Reports can be accessed on multiple devices and in more than 25 languages.

STANDARD REPORTS

Consol's standard reports are the most commonly requested reports by our user community. All services procurement departments share some basic program metrics, and these reports are available with one click. Easily exportable to all

commonly shared file formats, these reports are shared throughout an organization and input into various types of daily communication. Consol can be easily configured based upon role to give different users access to different report sets.



AD-HOC REPORTS

There are times when requests for information extend beyond standard reports. Perhaps a manager wants to create a graph of anticipated budget for the upcoming quarter; he or she could create a report that compares spend by job title across all locations and drills down by supplier, spanning the last three billing periods. Consol's robust ad-hoc reporting tool set allows user defined report creation on any field in Consol *Transact*. Many graphical presentation tools are available from pie charts to bar graphs, and beyond, and with a click of a button, the format can be modified. Just as with the standard reports, ad-hoc reports can be easily scheduled, batched and sent to any group of users.



PERFORMANCE ANALYTICS

Make smarter, data driven decisions with Consol's performance analytics. Business intelligence is more than just technology and benchmarking; it's a combination of outstanding report delivery technology, a robust data warehouse, and a deeply experienced team providing analytic services. Any one piece alone just really isn't business intelligence.

Managers and analysts who need to dissect and report on performance trends will find the dashboard's powerful multi-dimensional tools highly useful. The tool allows users to perform fast and complex analysis of fiscal periods, sales regions, product groups, cost centers and more. The dashboard makes it easy to compare current data with previous months and years to compare changes over time.

The user-friendly interface means hiring managers and executives will find insightful answers quickly. Consol's ease of integration with third-party applications ensures thorough access to all relevant data.

SCORECARDING

Scorecarding allows users to quickly monitor important supplier goals and performance levels, and use them for impact analysis,

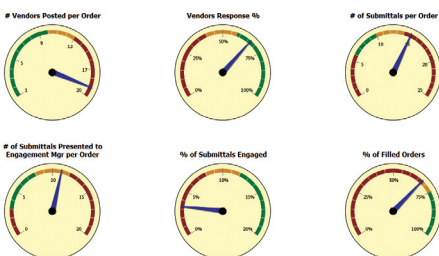
cause-and-effect, and to identify areas of a program that need improvement. The Supplier Performance Meter report instantly shows users if there are red flags for any supplier and automatically monitors quality and metrics.

DATA WAREHOUSE AND ANALYTICS EXPERTISE

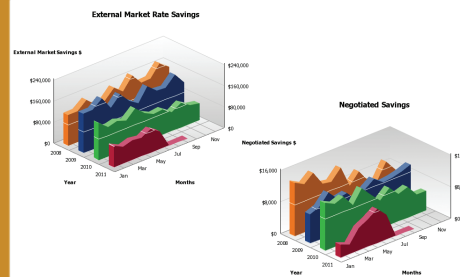
Committed to optimizing human capital sourcing and management and unlocking overall business process potential, ProcureStaff Technologies has industry leading Business Intelligence (BI) data and analytics experts available to provide key information insight. In order to ensure the most relevant industry data and robust data warehouse, ProcureStaff Technologies analysts conduct cleansing and data normalization operations, transforming data into information that can be accurately assessed and properly leveraged.

Using multivariate and regression analysis, our BI experts employ quality best practices by closely examining the interplay of factors underlying labor costs while selecting the most effective sourcing models to achieve set objectives. Focused on forecasting, particularly in unstable economic times, ProcureStaff Technologies uses predictive modeling to maximize services spend management via proprietary analytics to determine accurate, unbiased and efficient forecasts.

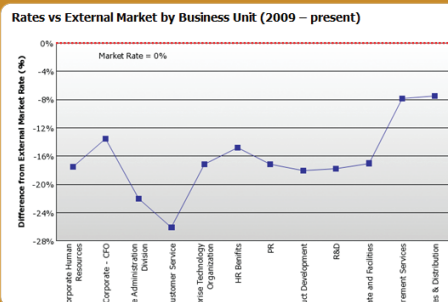
Key Performance Indicators



Savings



Benchmarking



Supplier Performance

Vendor Performance Metrics (Jan 2011 - Present)

Sector: IT Status: Active Inactive Run >

Vendor	Performance	Status	Diverse	Spend (Labour Only)	SR Rates	No. POs Completed	SR Rates	No. Submittals (Filled Orders)
At Trucks, SP	●	Active	Yes	\$0.00	-11.2%	1	-34.1%	4
BBF Supplies, SP	●	Active	No	\$121,226.00	1.2%	5	16.7%	30
Brown Farming, Inc	●	Active	No	\$201,288.50	0.0%	4	0.0%	32
Greenwood Consulting, LP	●	Active	No	\$151,403.00			55.9%	2
World Wide Supplies, LP	●	Active	Yes	\$137,965.50	0.0%	5	1.3%	8